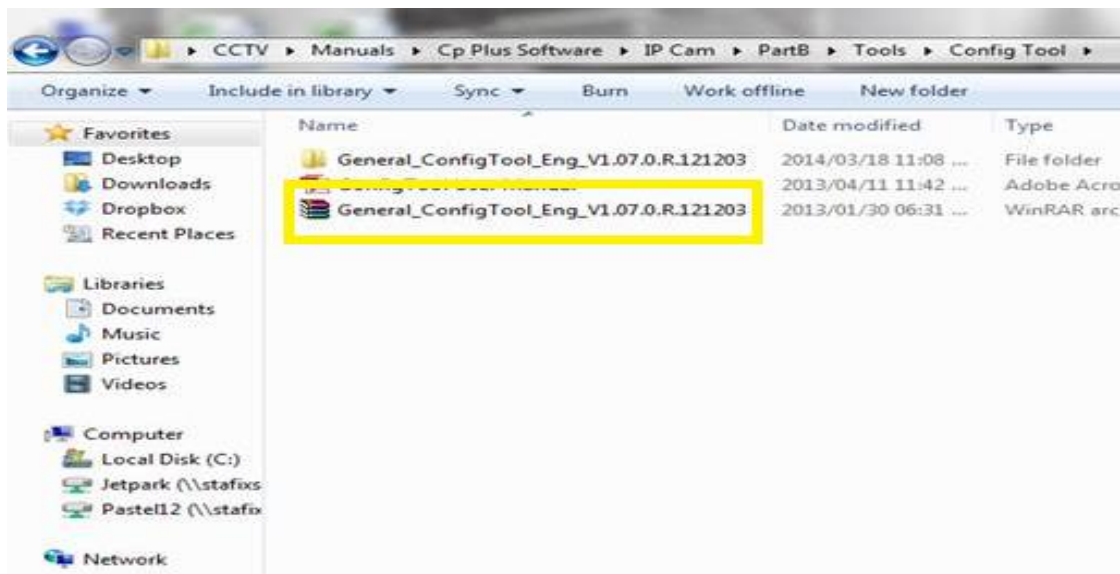


# Access an IP Camera on a Network

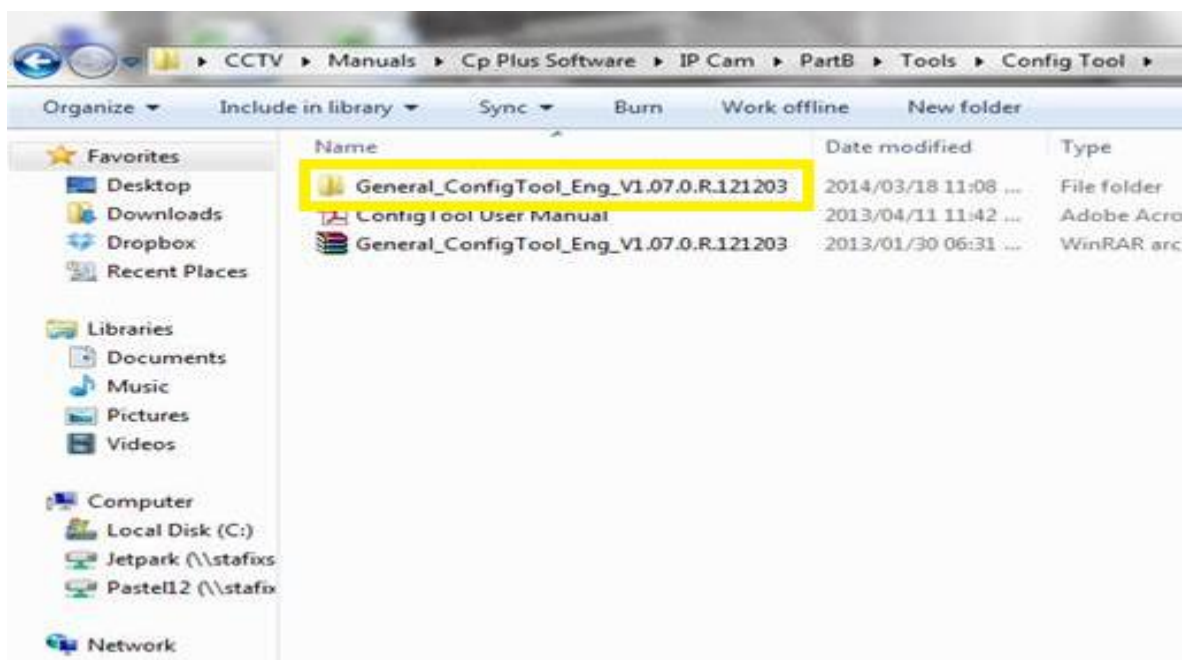
To access an IP Camera on a network, please do the following steps:

Once the Camera is connected to a Network Point

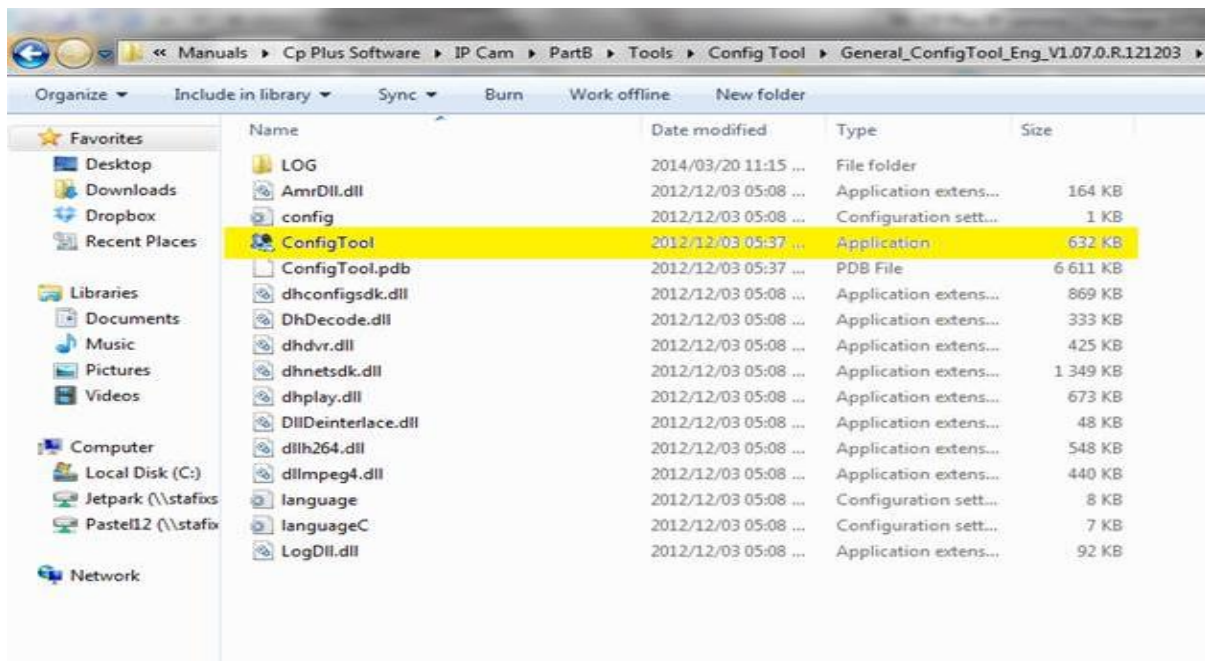
Open Part B of the CD Software, open the file “Tools”, open file “Config Tool” and then you will see the following:



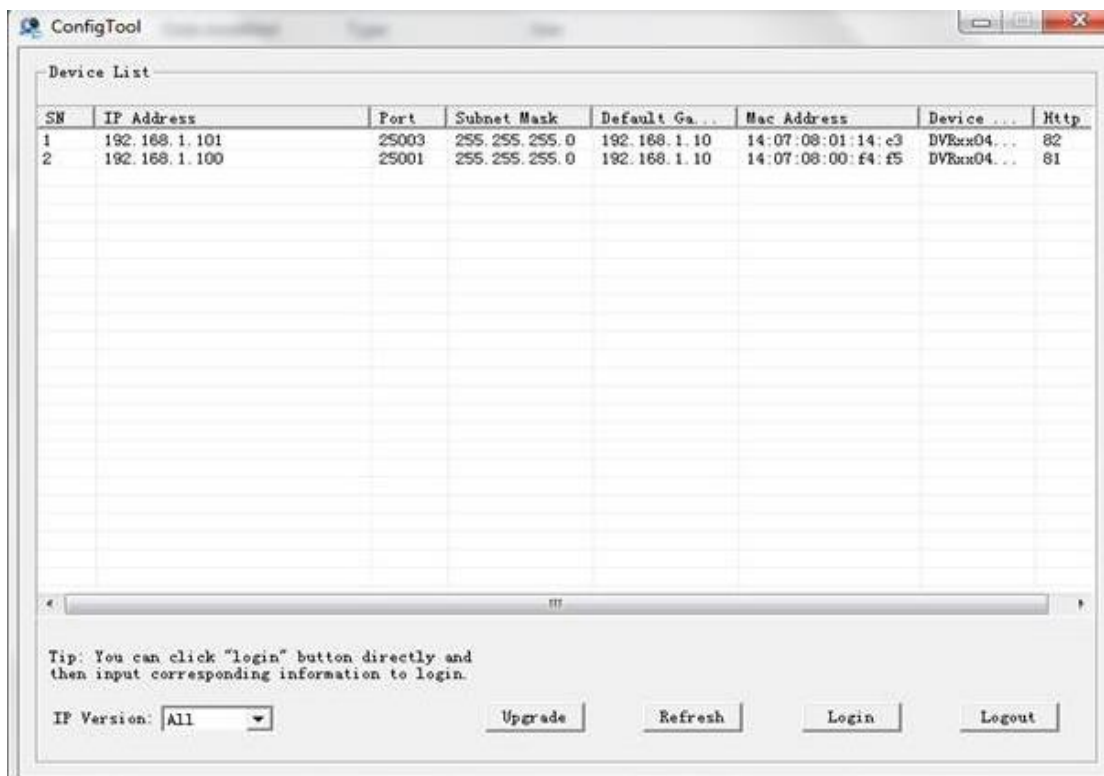
Open the WinRar Archive file (Highlighted above) and extract the files. You should then have a file called “General ConfigToolEng”:



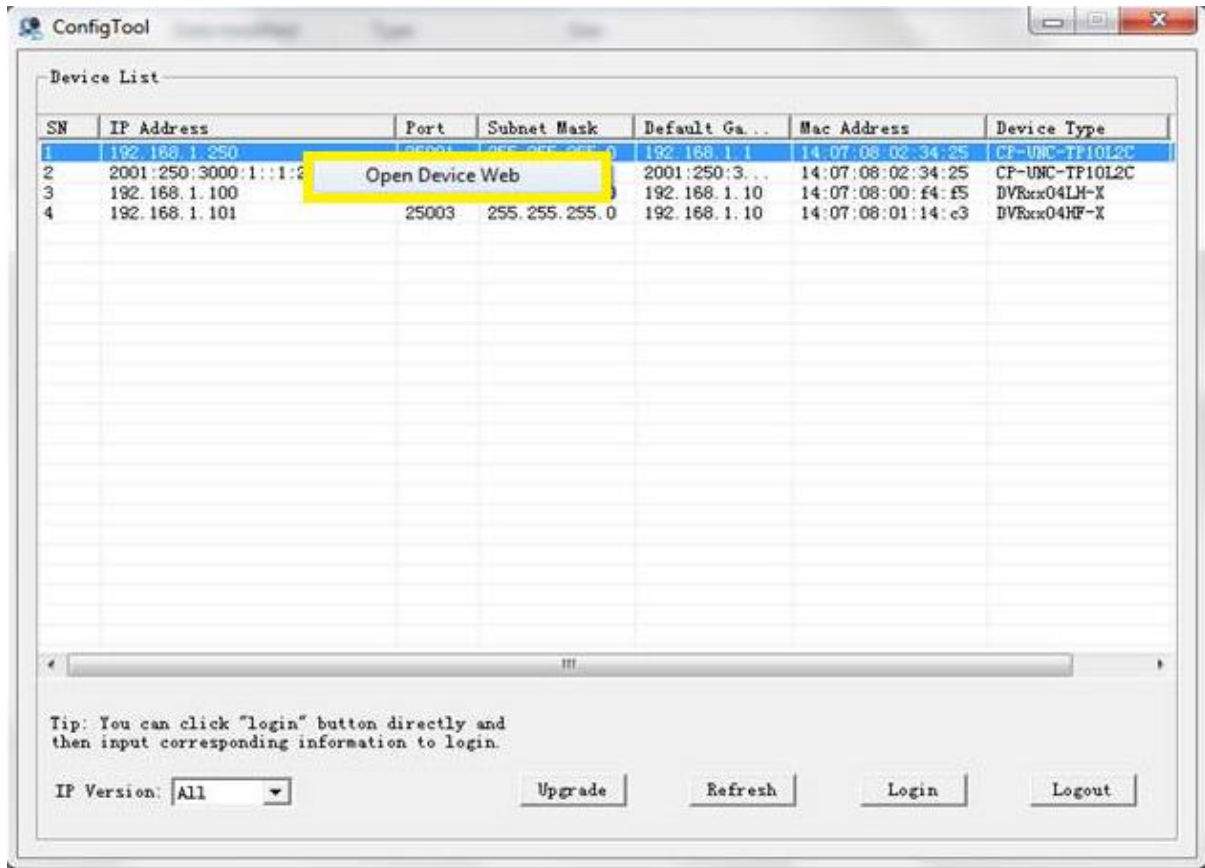
Open the folders until you see the following:



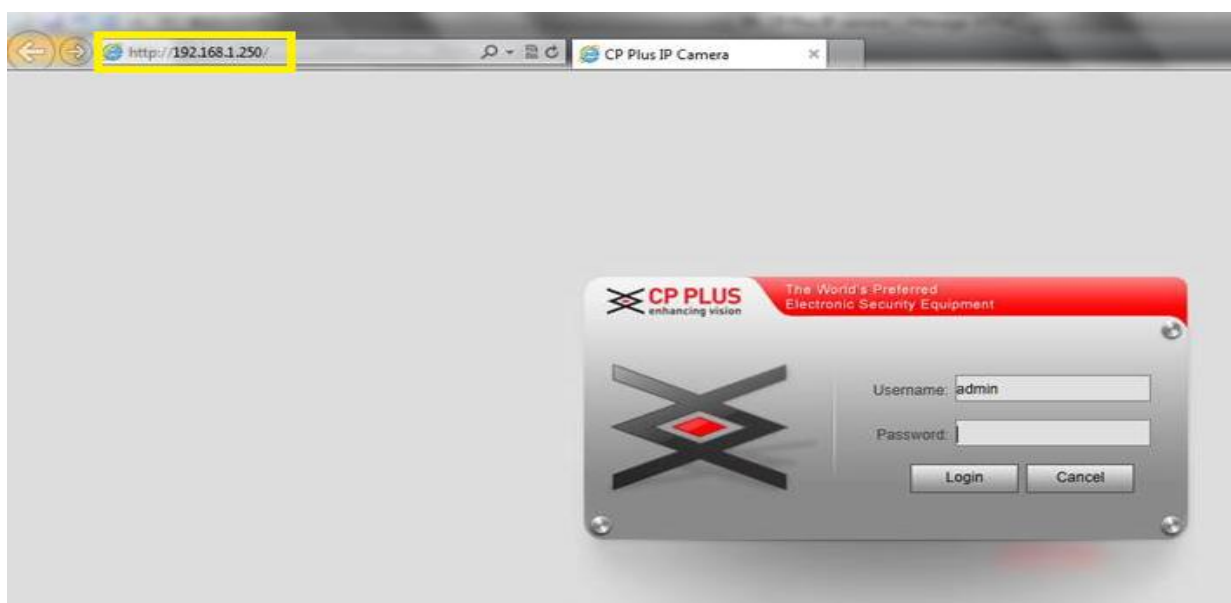
Run the Config Tool application as highlighted above and then you should see this pop up:



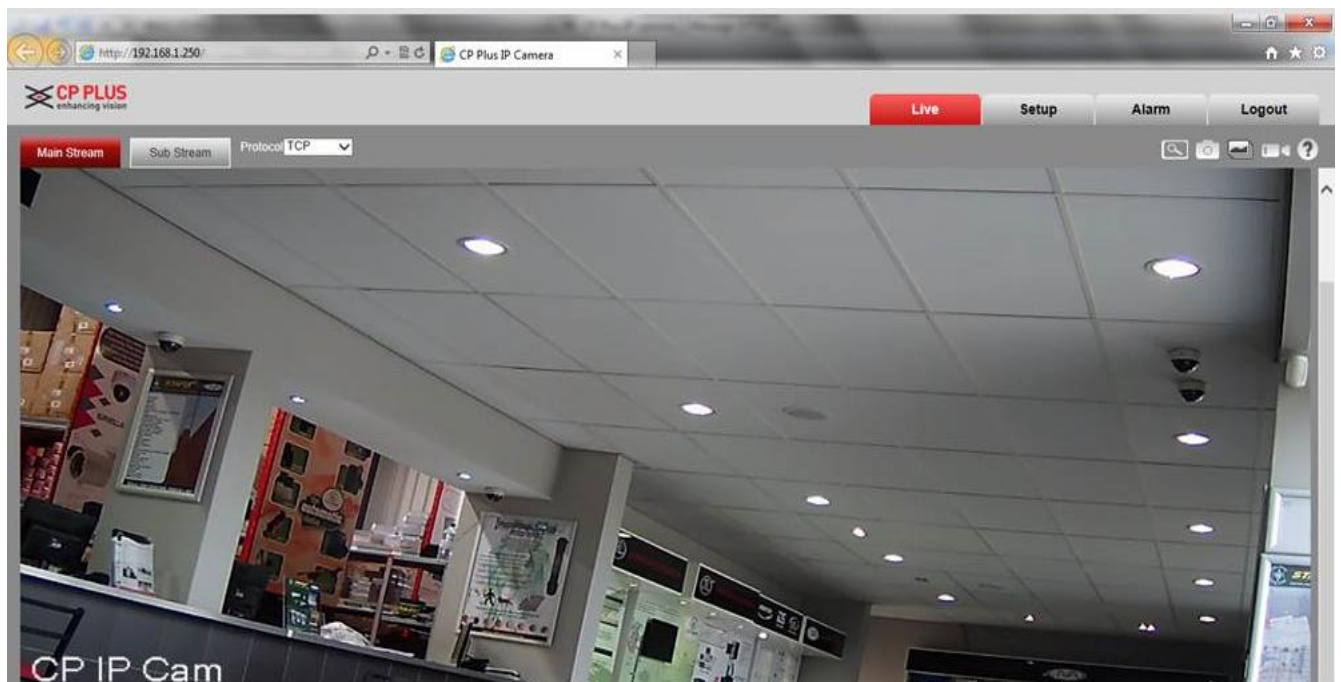
TheConfig Tool application will automatically pick up all IP Camera's, DVR's and NVR's connected to the network. Once you have located the IP Cam, right click and select "Open Device Web" as below:



Your default Web Browser will then open (preferably Internet Explorer if using Windows) and you will get to a log in page as below (please take note of Internal IP Address Highlighted):



Log in, default User is “admin”, default password is “admin”:



And you will then have access to the IP Camera using the web view application.